



ASIAN  
PACIFIC  
FUND

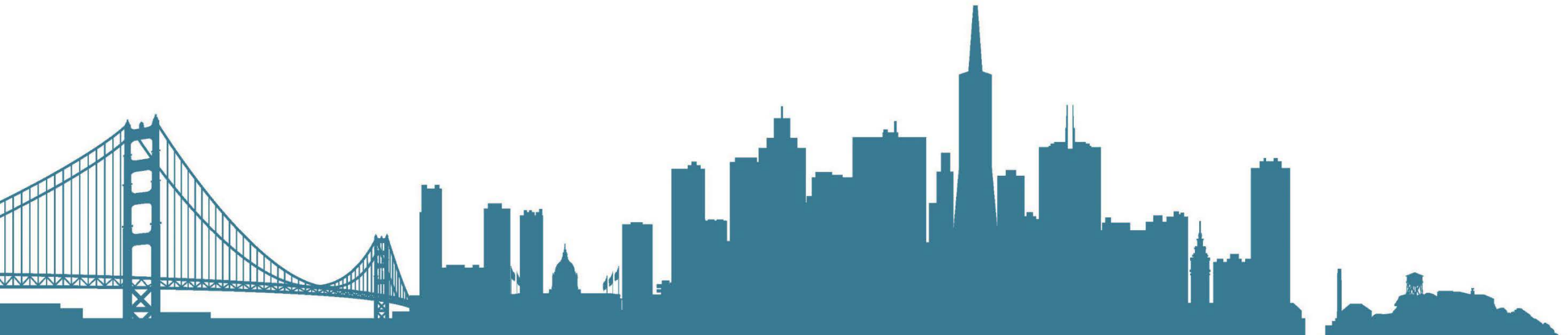
A Community Foundation

# API SUMMIT 2020

---

MAY 28, 2020

Welcome - We Will Begin Shortly



# Thanks to Our Sponsors



Blue Shield of California Foundation is an independent licensee of the Blue Shield Association



CSAA Insurance Group,  
a AAA Insurer



ADVANCING RIGHTS. CREATING OPPORTUNITIES.

# Tag Us on Social Media

**#APISummit**



**@AsianPacificFnd**  
(no “u” in “Fund”)



**@AsianPacificFund93**



**@asianpacificfund**

# Network of 80+ Nonprofits



# Pivoting to Meet Demand

- Launched food delivery programs
- Reconfigured space to offer food pantries
- Built new websites to capture data and share information
- Reimagined and ramped up services for remote delivery



Southeast Asian Community Center



Chinatown Community Development Center



Taulama for Tongans

# COVID-19 Response Fund



## Over \$500K Raised & Distributed in April

- **Food insecurity**
- **Shelter for victims of domestic violence**
- **Support for isolated seniors**
- **Access to healthcare**
- **In-language resources and support**

# Give In May Campaign

Did you #GiveInMay yet?



**GIVEINMAY**

ASIAN PACIFIC AMERICAN HERITAGE MONTH

PRESENTED BY   ASIAN PACIFIC FUND

STRATEGIC PARTNERS  ASIAN PACIFIC Community Fund   AAPIP Building Democratic Philanthropy

**Over \$150K Raised from 1,000+ Donors  
92 Nonprofits in over 25 Cities**

[www.giveinmay.org](http://www.giveinmay.org)

# Enduring Economic Impact



VIDEO

LIVE

SHOWS

2020 ELECTIONS

## Asian Americans face coronavirus 'double whammy': Skyrocketing unemployment and discrimination

*Some Asian American business owners question how they will survive the crisis.*

Sections 

The Washington Post  
*Democracy Dies in Darkness*

Get 1 year for \$29

Gift Subscriptions 

National

## Fear sent her Chinatown restaurant spiraling. The challenges to reopening feel 'just impossible.'

By [Hannah Knowles](#) and [Kim Bellware](#)

May 16, 2020 at 5:00 a.m. PDT



# Enduring Impact on Health

San Francisco Chronicle

CORONAVIRUS LOCAL FOOD ELECTION SPORTING GREEN BIZ+TECH CULTURE DESK DATEBOOK

HEALTH

## Why has coronavirus taken such a toll on SF's Asian American community? Experts perplexed over high death rate



Joaquin Palomino | May 20, 2020 | Updated: May 21, 2020 9:17 a.m.

Search

US edition

Search jobs

Sign in

# The Guardian

News

Opinion

Sport

Culture

Lifestyle

More

US Elections 2020 World Environment Soccer US Politics Business Tech Science

California

**'The disease is ripping through': why coronavirus is devastating California's Pacific Islanders**

# Enduring Impact on Mental Health



**AsAmNews**

● [ASIAN AMERICANS](#)

Apr 30, 2020 1 comment

## The mental health implications of COVID-19 related violence against Asian Americans

posted by Serena Chow

Medical  press

[Week's top](#)

[Latest news](#)

[Home](#) / [Psychology & Psychiatry](#)



 APRIL 28, 2020

## Asian Americans already face a mental health crisis—coronavirus racism could make it worse

by Bethany Ao

# Asian Health Services on the Frontlines

## Rapid Response

- **Radical Transformation**
- **Telehealth**, Safety, protection for patients, frontline workers

## Lifeline for 50,000 AAPIs

- **Emergency relief, health care, counseling**
- Isolated, delayed care, Public Charge, anti Asian racism

## Disparities in Health

- Suggestion of severe **AAPI disparities**
- AHS and partners = Uncover **AAPI data**
- PREVENT being simultaneously **overlooked and blamed** for COVID19

## Solutions

- ONE – **Multilingual and multicultural competency**
- TWO – **INNOVATION** – high touch high tech
- THREE – **Advocacy** – Immigrant health, No Public Charge

# STOP AAPI HATE | Bay Area

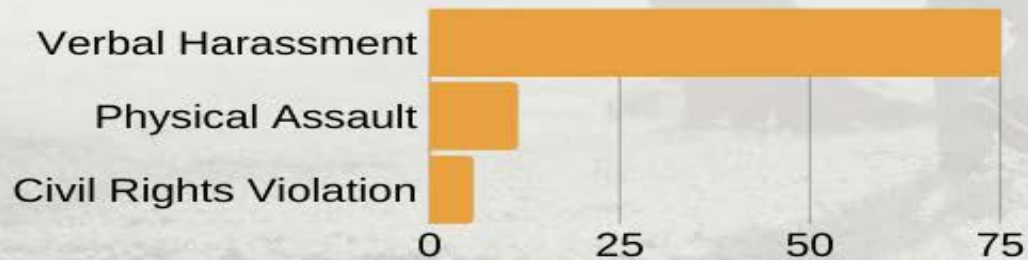
Has received over **1,800** reports. 

Reported incidents are **nationwide** (45 states)



with **40%** coming from **California** and **19%** from the **Bay Area**.

## Types of Discrimination



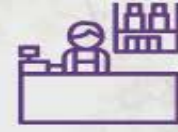
With shelter-in-place, a **significant number of incidents** are now taking place in:



Grocery Stores

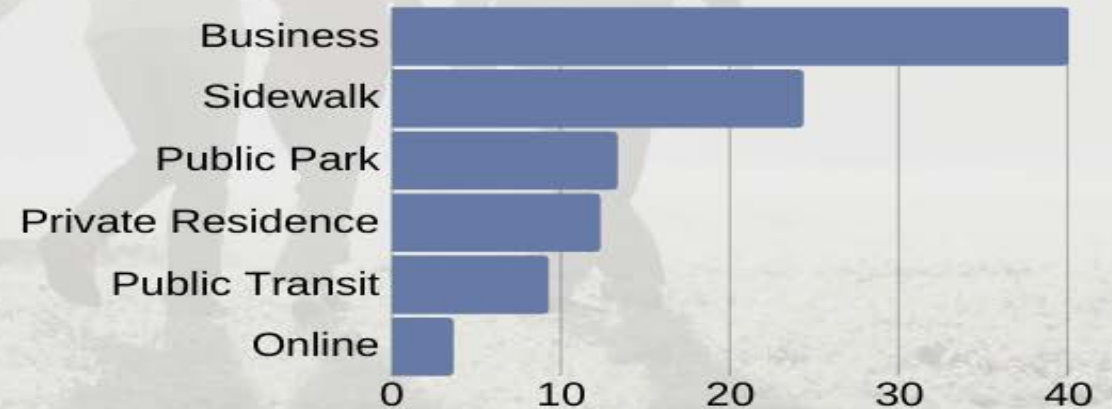


Pharmacies



Big Box Retail

## Sites of Discrimination



\*Data from the Stop AAPI Hate Bay Area Report 5/13/2020.



# STOP AAPI HATE | Bay Area

## AAPI Women



Have reported **2.3x** more incidents of harassment than men.

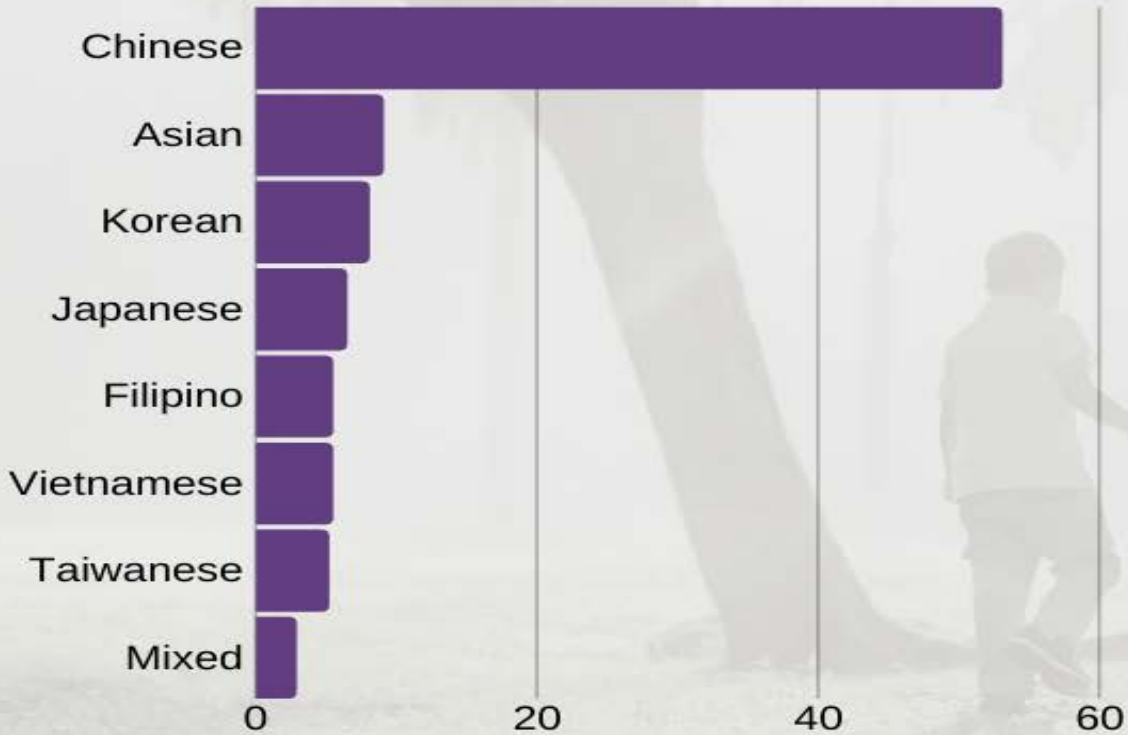
## Young Adults (20-29)

Are involved in over **26%** of incidents.

## Seniors (over 60)

Are involved in nearly **10%** of incidents.

## Ethnicities:



\*Data from the Stop AAPI Hate Bay Area Report 5/13/2020.



# ACCI: Increased Demand for Services

- Meals to seniors: up from 130 to 500 per week
- Pivoted services: onsite meals to home deliveries
- Financial assistance requests: up 200%
- Financial assistance provided: \$76,000 in one month
- Health care visits: down 50%





ASIAN  
PACIFIC  
FUND

A Community Foundation

# API SUMMIT 2020

---

MAY 28, 2020

Thank you for joining us!

